

STYLE IA-2-CF

INTEGRATIONS

PROJECT: _____

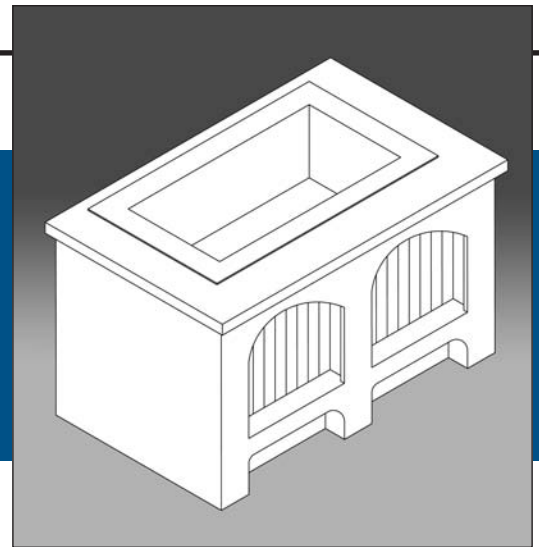
ITEM: _____ QUANTITY: _____

SPECIFICATIONS

The IA-2-CF is a modular serving counter with a mechanical cold pan display unit. Featuring a 14-gauge stainless steel top, stainless steel interior base, painted wooden exterior on three sides with a wainscoting exterior front recessed painted accent panels. Matching painted wooden base conceals the heavy-duty adjustable legs.

Available depths: 38"

Available lengths: 36" 48" 60" 72" 84" 96"



STANDARD FEATURES

- 14-Gauge Stainless Steel Top
- Stainless Steel 18-Gauge Base Cabinet Open Rear
- 6" Adjustable Legs
- Painted Exterior: Standard Colors
- 8'-0" 120 Volt Cord and Plug

■ All Integration Series counter bases are fabricated in 18-gauge, type 304 stainless steel. Each counter top is fabricated in 14-gauge, type 304 stainless steel with a 2" drop edge and welded corners. Heavy duty 14-gauge cross bracing is provided as standard for additional stability and deflection resistance. Each unit is internally wired to accommodate either 120volt or 208volt operation to a factory-mounted junction box. All Integration Series counters are NSF listed for sanitation. All millwork exteriors are fabricated in accordance with AWI standards.

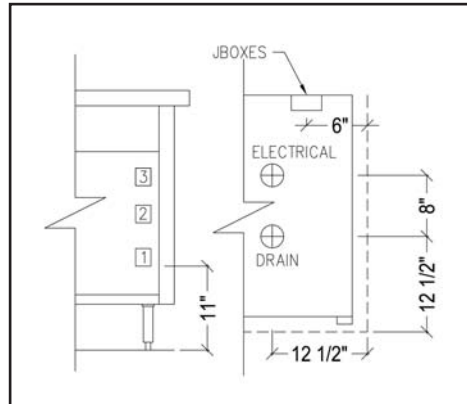
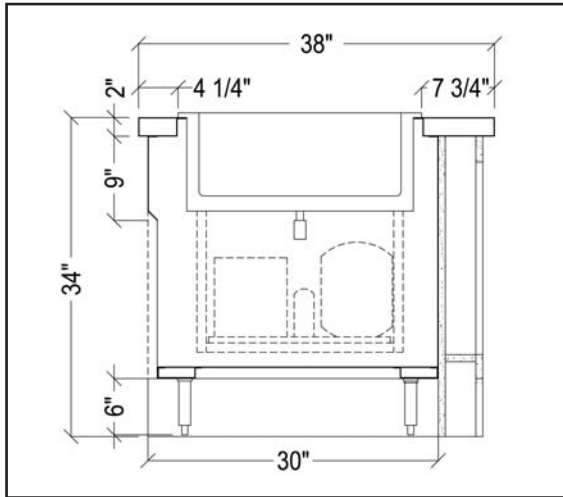
OPTIONAL FEATURES

- Stainless Steel Toe Base in Lieu of Wood Base
- Convenience Outlet Panel Mounted with a Cord and Plug
Specify Voltage, Wattage and Location
- Vertical Stainless Steel Corner Trim
- Casters
- Louvers to Match Base
- Exterior Painted Finish: Non-Standard Color
- Wainscot Recessed Panels: Non-Standard Color
- Corian Top: Stock Colors
- Corian Top: Non-Stock Colors
- Zodiac Top: Stock Colors
- Zodiac Top: Non-Stock Colors
- Standard Grade Laminate Top
- Top Extension up to 12"
- Top Extension 12" with Stainless Steel Tray Runners
- Trayslide12"
 - Stainless Steel Tubular Solid
 - Corian Stock Zodiac Stock Laminate
 - Corian Non-Stock Zodiac Non-StockAll Tray Slides Standard with (3) Stainless Steel Runners
- Rear Doors
 - Stainless Steel Laminate Painted
- Door Locks
- Accent Recessed Lights at Display Shelf
- Island Style: Unit Will Change in Depth To 44"
- Sneeze Guard: Model #
- 5 Year Compressor Warranty
- Remote Refrigeration

STYLE IA-2-CF

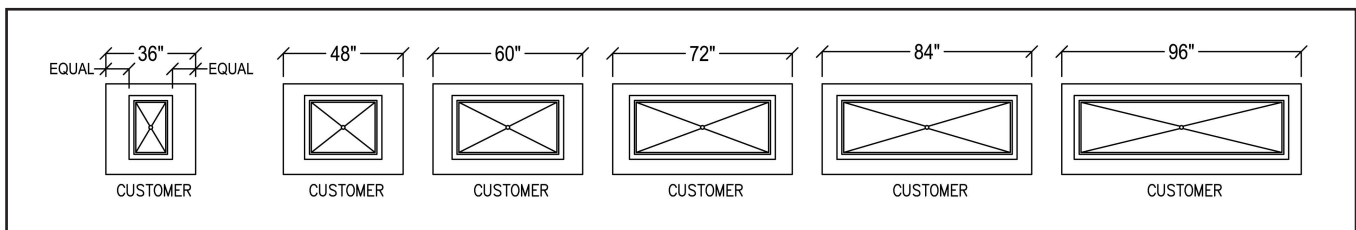
TOLL FREE: 800-525-3692

INTEGRATIONS



Electrical & Plumbing locations

1. Junction box for main power supply. 2. Junction box for drop in equipment 3. Junction box for sneeze upper unit.



MODEL	L	W	H	ELECTRICAL	NEMA PLUG	PLUMBING	AMPS	WT
IA-2-CF-36	36"	38"	34"	120V/60/1 Phase	5-15P	1" I.W.	7.1	365
IA-2-CF-48	48"	38"	34"	120V/60/1 Phase	5-15P	1" I.W.	7.1	465
IA-2-CF-60	60"	38"	34"	120V/60/1 Phase	5-15P	1" I.W.	7.1	575
IA-2-CF-72	72"	38"	34"	120V/60/1 Phase	5-15P	1" I.W.	7.8	685
IA-2-CF-84	84"	38"	34"	120V/60/1 Phase	5-15P	1" I.W.	10.7	795
IA-2-CF-96	96"	38"	34"	120V/60/1 Phase	5-15P	1" I.W.	10.7	910

NOTE: All electrical requirements are for drop-in only.

RPI Industries, in line with its policy to improve its products, reserves the right to change materials or specifications without notice. Any adverse conditions will affect warranty.

CALL TOLL FREE: 800-525-3692 (609-714-2330)

FAX: 609-714-2331 www.regalpinncle.com

220 ROUTE 70, MEDFORD, NJ 08055

