

VIENNA GRAB-N-GO

PROJECT: _____

ITEM: _____ QUANTITY: _____

MODEL # VIAS-CV CURVED GLASS

Shown with optional counter.

SPECIFICATIONS

The VIAS-CV Vienna Series is a drop in self service air screen style refrigeration unit with curved glass front and glass side panels. Unit is standard with rear see through access doors.



Available depths: 27 3/8"

Available (above counter) heights: 20 7/8" 27 5/8" 34 1/4"

Available lengths: 31 1/2" 44 1/4" 57 1/8" 69 7/8"

STANDARD FEATURES

- 304 Stainless Interior
- Programmable Refrigeration Controller
- Fully Automated Hot Gas Defrost
- Forced Air Cooling System
- Self-Contained Refrigeration System with Pull Out Compressor Housing
- Lift Up Evaporator
- Removable Air Flow Pans for Cleaning
- Hinged Rear See Through Access Doors
- Easily Removable Side Glass Panels
- Environmentally Safe Refrigerant

OPTIONAL FEATURES

- Remote Refrigeration (Hot Gas Defrost Not Available)
- 5 Year Compressor Warranty
- Rear Air Ventilation Kit
- Integration Modular Counters (Consult Factory)



WHEN ORDERING SPECIFY:

Application: _____

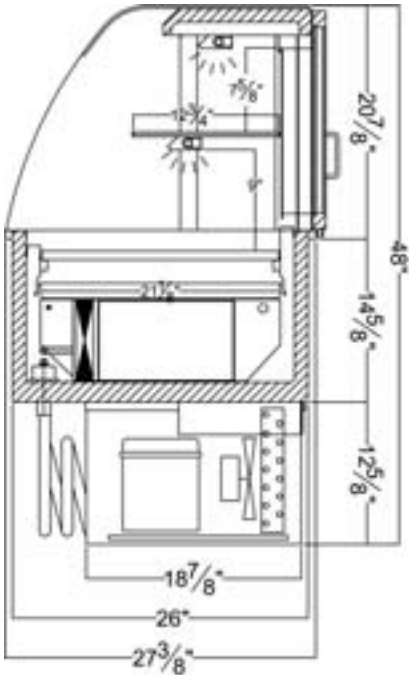
Refrigeration Type: _____

MODEL	L	W	H ABOVE COUNTER	COMP HP	VOLT	AMPS	NEMA PLUG	WT	CUT-OUT SIZE
VIAS2-20-R-CV-SC	31 1/2	27 3/8	20 7/8	1/3	115	9.1	5-15P	293	29 7/8 x 26 3/8
VIAS3-20-R-CV-SC	44 1/4	27 3/8	20 7/8	1/2	115	10.6	5-15P	379	42 3/4 x 26 3/8
VIAS4-20-R-CV-SC	57 1/8	27 3/8	20 7/8	3/4	115/230	7.2	14-20P	440	55 1/2 x 26 3/8
VIAS5-20-R-CV-SC	69 7/8	27 3/8	20 7/8	3/4	115/230	8.5	14-20P	493	68 1/4 x 26 3/8
VIAS2-27-R-CV-SC	31 1/2	27 3/8	27 5/8	1/2	115	10.6	5-15P	346	29 7/8 x 26 3/8
VIAS3-27-R-CV-SC	44 1/4	27 3/8	27 5/8	3/4	115/230	6.7	14-20P	412	42 3/4 x 26 3/8
VIAS4-27-R-CV-SC	57 1/8	27 3/8	27 5/8	3/4	115/230	8.3	14-20P	483	55 1/2 x 26 3/8
VIAS5-27-R-CV-SC	69 7/8	27 3/8	27 5/8	3/4	115/230	9.4	14-20P	552	68 1/4 x 26 3/8
VIAS2-34-R-CV-SC	31 1/2	27 3/8	34 1/4	3/4	115/230	7.3	14-20P	363	29 7/8 x 26 3/8
VIAS3-34-R-CV-SC	44 1/4	27 3/8	34 1/4	3/4	115/230	8.1	14-20P	435	42 3/4 x 26 3/8
VIAS4-34-R-CV-SC	57 1/8	27 3/8	34 1/4	1	115/230	10.5	14-20P	513	55 1/2 x 26 3/8
VIAS5-34-R-CV-SC	69 7/8	27 3/8	34 1/4	1 1/2	115/230	12.4	14-20P	589	68 1/4 x 26 3/8

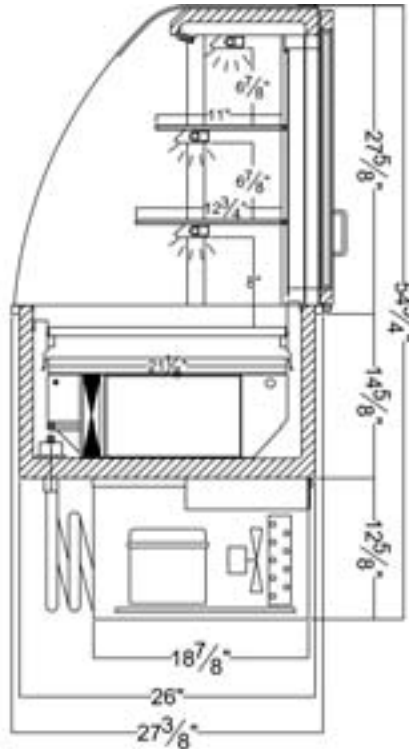
VIENNA GRAB-N-GO

MODEL # VIAS-CV CURVED GLASS

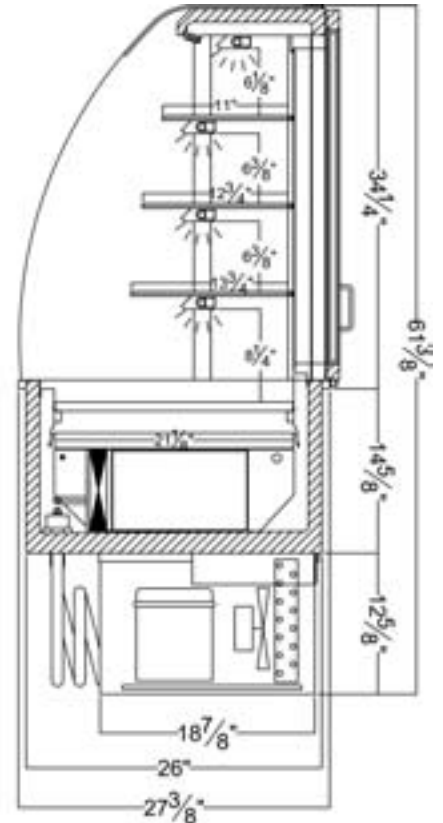
VIAS-20-R-CV-SC



VIAS-27-R-CV-SC



VIAS-34-R-CV-SC



LARGEST DIMENSION REPRESENTS OUTSIDE FLANGE

- 1.** A 1" diameter drain is provided. The drain **MUST** be connected to a floor drain or storage container **AT TIME OF INSTALLATION**.
- 2.** Front and Rear ventilation louvers, each at least 25" W x 20" H, **MUST** be provided in the cabinet or counter and located so to provide full ventilation for the condensing unit.
- 3.** The VIAS-CV merchandiser is designed for use in locations where temperatures and humidity do not exceed 75 degrees and 55% R.H. Any adverse conditions will affect warranty. Locate away from direct sunlight, rapid air currents and extreme temperature changes. Exposure to air currents from ceiling fans, air conditioners, ovens, etc. will disrupt the cases air current and refrigeration zone within.

RPI in line with its policy to continually improve its product reserves the right to change materials and specifications without notice.

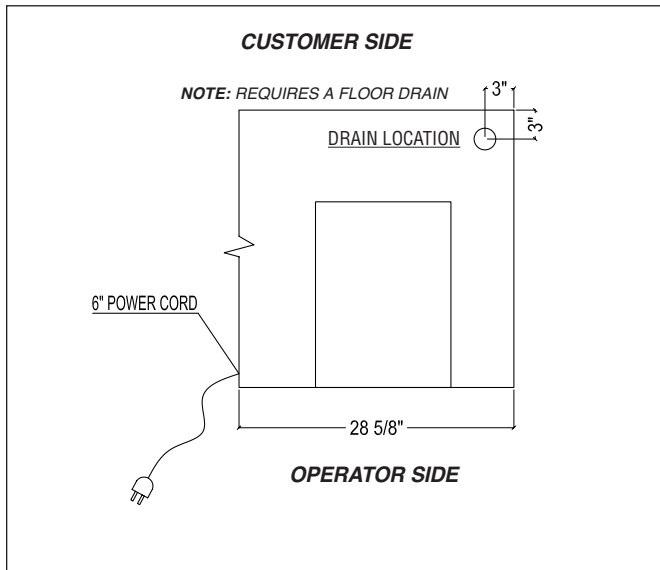


LARGEST DIMENSION REPRESENTS OUTSIDE FLANGE

VIENNA GRAB-N-GO

TOLL FREE: 800-525-3692

MODEL # VIAS-CV CURVED GLASS



Electrical & Plumbing locations



CALL TOLL FREE: 800-525-3692 (609-714-2330)

FAX: 609-714-2331 www.regalpinnacle.com

220 ROUTE 70, MEDFORD, NJ 08055

RPI REGAL
PINNACLE
INTEGRATIONS INDUSTRIES, INC.